

- 4** Press [←] or [→] to select <ON>, then press [OK].
- 5** Press [←] or [→] to select the desired interval, then press [OK].  
You can set the interval from 3 to 30 minutes (in one-minute increments).  
You can also enter values with the numeric keys.
- 6** Press [Stop/Reset] to return to the standby mode.

**File Name:** Canon mf4150 user manual.pdf

**Size:** 4639 KB

**Type:** PDF, ePub, eBook

**Category:** Book

**Uploaded:** 1 May 2019, 18:46 PM

**Rating:** 4.6/5 from 713 votes.

## Download Now!

Please check the box below to proceed.



I'm not a robot



reCAPTCHA  
Privacy - Terms

»»  
1-12

## Book Descriptions:

# Canon mf4150 user manual



After you finish reading this guide, store it in a safe place for future reference. What Can I Do with This Machine. Before Using the Machine Document Handling Print Media Sending Faxes Receiving Faxes Copying. Never attempt to disassemble the machine opening and removing its interior covers will expose you to dangerous voltages and other risks. For all service, contact Canon Customer Care Center, or a Canon Authorized Service Facility. Keep the area free so you can reach the outlet quickly. If you notice anything unusual smoke, strange odors, noises around the machine, unplug the power cord immediately. Contact Canon Customer Care Center. Indicates a warning that may lead to death or serious injury if not WARNING observed. All rights reserved. No part of this publication may be reproduced, transmitted, transcribed, stored in a retrieval system, or translated into any language or computer language in any form or by any means, electronic, mechanical, magnetic, optical, chemical, manual, or otherwise, without the prior written permission of Canon Inc. All other product and brand names are registered trademarks, trademarks or service marks of their respective owners. As an ENERGY STAR product this product meets the ENERGY STAR program that promotes energy saving through the use of computers and other office equipment. A dedicated extension off a PBX machine without "Call Waiting" can be used with the machine. Key telephone systems are not recommended because they send nonstandard signals to individual telephones for ringing and special codes, which may cause a fax error. Users should contact Canon Authorized Service Facilities for servicing of equipment. Information regarding Authorized Service Facility locations can be obtained by calling Canon Customer Care Center 18008284040. FCC Notice imageCLASS MF4150 Model F149200 This device complies with Part 15 of the FCC Rules.

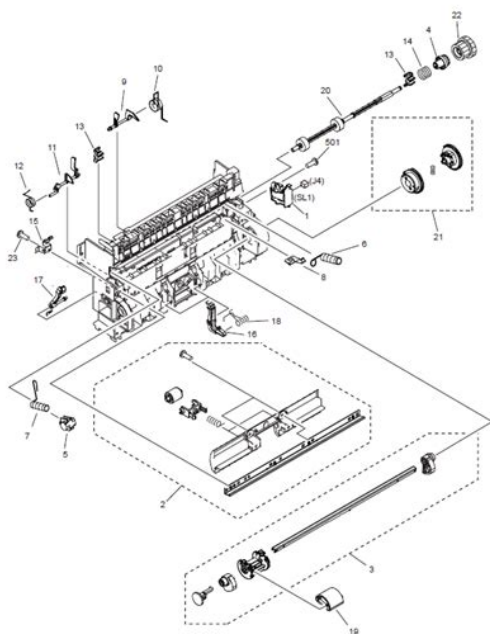
Operation is subject to the following two

conditions. <http://www.completeinvestigations.co.uk/userfiles/drug-formulation-manual-pdf.xml>

- **canon mf4150 user manual, canon mf4150 service manual, canon mf4150 service manual pdf, canon imageclass mf4150 user manual, canon mf4150 user manual, canon mf4150 user manual pdf, canon mf4150 user manual free, canon mf4150 user manual software, canon mf4150 user manual downloads, canon mf4150 user manual instructions, canon mf4150 user manual user, canon mf4150 user manual guide,**

## canon mf4150 user manual online.

FIGURE 310  
PAPER PICK-UP ASS'Y

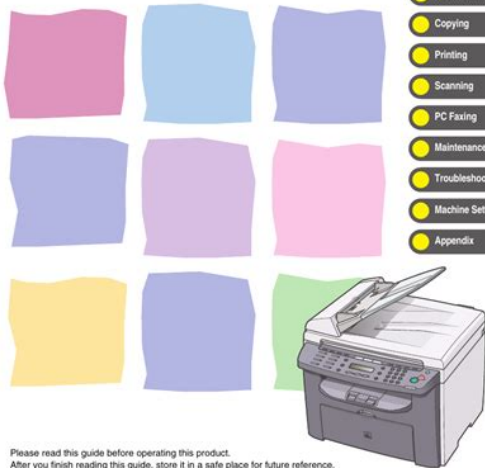


A dedicated extension off a PBX machine without "Camp On" signals is also permissible with the machine. Key telephone systems are not recommended because they send nonstandard signals to individual telephones for ringing and special codes, which may cause a fax error. This is confirmed by the registration number. The abbreviation, IC, before the registration number signifies that registration was performed based on a Declaration of Conformity indicating that Industry Canada technical specifications were met. Slide guides Adjust to the width of the document. Document feeder tray Holds documents. Document delivery tray Receives documents. Operation panel Controls the machine. Platen glass Place documents. Output tray extension Extension for the output tray. Paper stopper Prevents the paper from falling off the output tray. For LGL paper, pull out the output tray extension first, and then open the paper stopper. Rear cover Open this cover when clearing paper jams. Power socket Connect the power cord. Telephone line jack Connect the external telephone cable. External device jack Connect an external device. Also, press to return the machine to the standby mode. Error indicator Flashes when an error has occurred. Lights when the machine has waiting jobs and stores the data in memory. The toner level is displayed in the LCD at four levels. If the toner gauge indicates that the toner is empty, it is recommended that the toner cartridge be replaced. You can also enter values with the numeric keys. Place your document face down. If your document does not match any of the paper size marks, align the center of your document with the arrow mark. Gently close the ADF. Adjust the slide guides to the width of the documents. When enlarging STMT originals to LTR paper, place your originals horizontally. The document is ready for scanning. Canon recommends you to use Canon type transparencies with this machine. <http://alterconseil.fr/alterconseil/images/drug-formulations-manual-3rd-edition.xml>



imageCLASS  
MF4150

# Basic Guide



- What Can I Do with This Machine?
- Before Using the Machine
- Document Handling
- Print Media
- Sending Faxes
- Receiving Faxes
- Copying
- Printing
- Scanning
- PC Faxing
- Maintenance
- Troubleshooting
- Machine Settings
- Appendix

Please read this guide before operating this product.  
After you finish reading this guide, store it in a safe place for future reference.

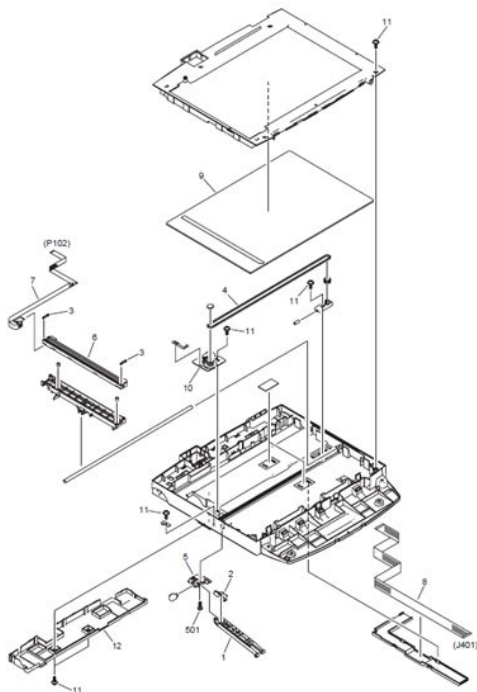
ENG

Into the MultiPurpose Tray Use the multipurpose tray when you want to copy or print on the different paper which is in the paper feeding tray. NOTE When you load paper with a logo on, position the paper with the print side up logo side and insert it so that the top of the paper feeds first in the multipurpose tray. When setting an envelope, gently insert the envelope into the multi purpose tray with the print side up and the right edge i.e., closer to the stamp first. NOTE If the paper guides are not adjusted correctly for the size of the paper, the quality of your printouts may be adversely affected. Specify the size and the type of the paper you load. For details on how to specify the paper size and type, see "Setting Paper Size and Type,". The procedure is same for the paper feeding tray and multipurpose tray except for selecting the paper feeding tray or multipurpose tray in step 3 and 6. For advanced sending features, see Chapter 1, "Advanced Fax Features," in the Advanced Guide. Set a Document Place the document on the platen glass or load it in the ADF. For documents you can fax, see "Document Requirements,". The higher image quality you set, the better the output will be, but the longer the transmission will take. Adjust the scan settings according to the type of document you are sending. NOTE When deleting all numbers, the registered name is cleared automatically. NOTE When deleting all numbers, the registered name is cleared automatically. For details on selecting a onetouch speed dialing key, see "Registering OneTouch Speed Dialing,". NOTE When deleting all speed dial numbers, the group name is cleared automatically. NOTE Make sure to confirm the dial tone before entering a fax number. If you enter the number before the dial tone can be heard, the call may not connect, or the wrong number may be dialed. Talk through the handset to the recipient. For advanced receiving features, see Chapter 1, "Advanced Fax Features," in the Advanced Guide.

For advanced copying features, see Chapter 2, "Advanced Copy Features," in the Advanced Guide. For documents you can copy, see "Document Requirements,". NOTE The image quality is automatically set to. For details on printer driver settings, see Online Help. Make sure that the scanner driver is installed. For details on scanner driver settings, see the Scanner Driver Guide in the User Software CD. Set a Document Place the document on the platen glass or load it in the ADF. The mark will be displayed above the button you select. For details on the MF Toolbox Settings, see Chapter 2, "Scanning a Document," in the Scanner Driver Guide. Turn off the main power switch and disconnect the power cord. Lift the scanning platform until it is locked A, and open the printer cover B. CAUTION Be careful not to get your fingers caught. Reconnect the power cord and turn on the

main power switch. Fuser Roller If black streaks appear with printing, the fuser roller in the main unit may be dirty. Should this occur, clean the fusing roller in the following procedure. Cleaning starts. When finished, the display returns to the standby mode. Close the ADF cover. CAUTION Be careful not to get your fingers caught. Open the ADF. 107 Clean the ADF scanning area on the left side of the platen glass and the document feeding roller with a cloth dampened with. If the message persists, replace the toner cartridge. Redistributing Toner Lift the scanning platform until it is locked A, and open the printer cover B. The arrow A on the toner cartridge should be facing away from you and pointing down. Print quality may deteriorate if the drum surface is exposed to light or is damaged. Remove the toner cartridge. Remove the new toner cartridge from the protective bag. NOTE Save the protective bag. You may need it later when you remove the toner cartridge from the machine. The arrow A on the toner cartridge should be facing away from you and pointing down.

FIGURE 400  
READER ASS'Y

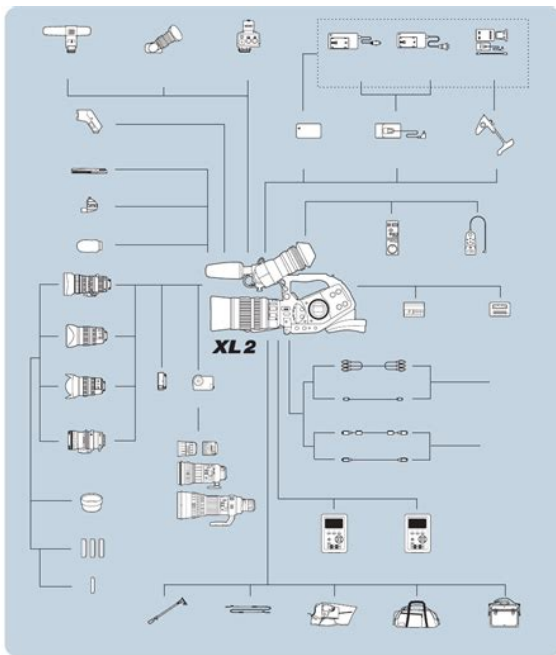


<https://www.becompta.be/emploi/bosch-hot-water-manual>

CAUTION Do not open the drum protective shutter on the toner cartridge. Print quality may deteriorate if the drum surface is exposed to light or is damaged. Instead, this rapidly growing program returns used cartridges to the manufacturing process, thus conserving an array of resources. Please Note Do not send defective cartridges for replacement. Residents of Alaska and Hawaii Do not use the UPS authorized returning label. For Alaska and Hawaii Canon set up alternative mail service with the U.S. Postal Service. Please call 1800OKCanon to receive U.S. Postal Service merchandise returning label. This donation is utilized in Canada. Turn off the main power switch. Disconnect the power cord and all the cables from the back of the machine. Lift the scanning platform until it is locked A, and open the printer cover B. Remove the paper from the paper feeding tray. Store the dust cover inside the machine. Push the paper guide rail, and then close the paper feeding tray. Detach the Document feeder tray. Make sure all the covers are closed. Warm water will set the toner. NOTE Do not force a jammed document or paper out of the machine. Contact Canon Customer Care Center if needed. 111 Document Jams When appears on the LCD display, remove a

jammed document from the ADF. NOTE Do not pull the document forcefully as it may tear. Hold both sides of any jammed documents and gently pull them out. Close the ADF cover. CAUTION Be careful not to get your fingers caught. This operation is required only when appears on the LCD display. Lift the scanning platform until it is locked A, and open the printer cover B. Hold both sides of the jammed paper and gently pull it out. 115 Gently pull the jammed paper between the fixing assembly A This operation is required only when appears on the LCD display. If the jammed paper is badly folded, similar to the folds of an accordion, ease the jammed paper loose and then pull it out from the machine.

<http://www.ilgiardinodeiviandanti.com/images/buchi-vacuum-controller-manual.pdf>



The arrow A on the toner cartridge should be facing away from you and pointing down. Print quality may deteriorate if the drum surface is exposed to light or is damaged. This operation is required only when appears on the LCD display. Load the paper into the paper feeding tray. Set the dust cover on the paper feeding tray. Action Varies by the message that appears. For details, see the explanation for the message i.e., . The printer cover is not closed completely. Appears alternately with other messages. The size of the paper in the paper feeding tray or multi purpose tray is different from. The data in memory was lost when the machine was turned on. Action Load paper in the paper feeding tray or multipurpose tray. This message appears when the main power switch is turned on or when the machine is not ready for printing. Install the toner cartridge correctly. See "Replacing the Toner Cartridge," on p. 108. Also print or delete any documents in memory. The received fax documents or the reports are in memory because paper or toner ran out, paper jams occurred, or incorrect paper size was loaded. The data from the PC was not printed. The printer is processing a print job. Action Varies by the message that appears. For details, see the explanation for the message i.e., . Do not attempt to disassemble or repair the machine yourself. NOTE Attempting to repair the machine yourself may void the limited warranty. To see the list of current settings, print out User's Data List. PAPER SETTINGS Setting Item 1 CASSETTE 2 MP TRAY COMMON SETTINGS Setting Item 1 DEFAULT SETTINGS 2 TONER SAVER MODE 3 DISPLAY LANGUAGE 125 Description Sets the paper type and size on the paper feeding tray. Registers your fax number. See "Set the Machine for Sending Faxes,". Sets whether to reduce or truncate the image when a faxed page is larger than the

size of paper loaded. See Chapter 1, "Advanced Fax Features,".

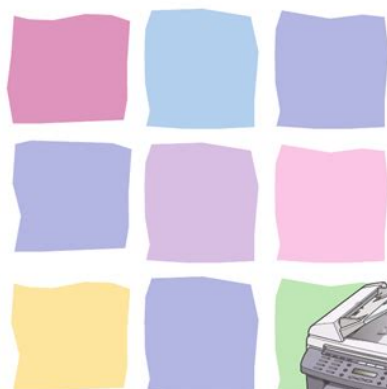
<http://www.btrcontrols.com/images/buck-bros-block-plane-manual.pdf>



imageCLASS  
MF4150

# Basic Guide

- What Can I Do with This Machine?
- Before Using the Machine
- Document Handling
- Print Media
- Sending Faxes
- Receiving Faxes
- Copying
- Printing
- Scanning
- PC Faxing
- Maintenance
- Troubleshooting
- Machine Settings
- Appendix



Please read this guide before operating this product.  
After you finish reading this guide, store it in a safe place for future reference.

ENG

Setting Item 1 1TOUCH SPD DIAL NAME TEL NUMBER ENTRY 2 CODED DIAL NAME TEL NUMBER ENTRY 3 GROUP DIAL NAME Description Registers destinations for broadcasting. Description Registers the information on onetouch speed dialing. Up to 8 destinations can be registered. Based on ITUT Standard Chart No. 1, MMR standard mode. This page requires Javascript. Modify your browsers settings to allow Javascript to execute. See your browsers documentation for specific instructions. To install your download click on the name of the downloaded file. Please click below to find a quick resolution to your inquiry. Resolutions Optical600 x 1200 dpi Interpolated9600 x 9600 dpi The driver may be included in your OS or you may not need a driver. Recommended Drivers File Name Date File Size Optional Drivers File Name Date File Size Recommended Software File Name Date File Size Optional Software File Name Date File Size Recommended Manuals File Name Date File Size Optional Manuals File Name Date File Size Scroll down to easily select items to add to your shopping cart for a faster, easier checkout. Visit the Canon Online Store Maximum Monthly Duty Cycle 7,500. After you finish reading this guide, store it in a safe place for future reference. Before Using the Machine Document Handling Print Media Sending Faxes Receiving Faxes Copying Printing Scanning PC Faxing Troubleshooting Machine Settings Appendix Maintenance What Can I Do with This Machine Machine Setup Software Installation Starter Guide. Basic Features Maintenance Machine Settings. Specifications Basic Guide This Document. Advanced Features. System Monitor Reports and Lists Advanced Guide. However, as we are constantly improving our products, if you need a exact specification, please contact Canon. The machine illustration on the cover may differ slightly from your machine. What Can I Do with This Machine. Preface Thank you for choosing a Canon product.

Before using the machine, please read the following instructions for your safety. Important Safety Instructions WARNING Except as specifically described in this guide, do not attempt to service the machine yourself. Never attempt to disassemble the machine opening and removing

ving it s inte rior co v ers wil l e xpos e y ou to dangerous v olt ages a nd other risks. F or all service, conta ct Cano n Custom er Care Center, or a Can on A uthorize d Service F acility. Dust accumulatio n c an pre vent the machine from operati ng properly. Do not place the machine in a cupboar d or b uil tin instal lation, or near a r adiator or other heat source u nless pr oper v entilation i s prov ided. K eep the area free so y ou can reach the outl et quic kly. If y ou notice an ything un usual smok e, str ange odors, noise s around the machine, unplug th e pow er cord immediatel y. Mak e sur e the cord is not knot ted or kink ed. W ARNING This prod uct em its l ow l e v el mag netic flux. If y ou use a cardi ac pa cemak er an d f eel abnormalit ies, plea se mov e a wa y from this produ ct and cons ult y our doc tor. Customer Support U.S.A. Y our machine is designed with the latest technol og y to pro vide tro ub lefree operat ion. If you encounter a prob lem wi th the mac hine' s operat ion, try to solv e it by using t he inf ormation in Chapter 11.How to Use This Guid e Symbols Used in This Man ual The f ollowing sy mbols ar e used th roughout t he manual s f or the machin e and indi cate the w arnings, c autions and notes y o u should k eep in mi nd when using the machi ne. W ARNING Indicates a warning that ma y lead to deat h or serious injur y if not obser v ed. CA UTION Expl ains how to a void actions that could injure y ou or damage y our machine. NO TE Explains operat ing restrictions and how to a void minor diffi culties. The numbers that poi nt to the k e y s on the operation panel diag ram correspond t o the order of steps to ta k e in the procedur e.

<http://ophthalmic-overnight.fr/wp-content/plugins/formcraft/file-upload/server/content/files/162719884a2872---brandsden-joachain-quantum-mechanics-solutions-manual.pdf>

All rights reser v ed. No part of this public ation ma y be reproduced, t ransmi tted, tr anscribed, store d in a retrie v al system, or transl ated into an y language or computer language in an y f or m or b y an y mean s, electron ic, mechanical, magnetic, opt ical, c hemical, manual, or o therwis e, wi thout the prior written permission of Canon In c. Disclaime rs The inf or mation in this document is subject to chang e without notice. CANON INC. MAKES NO W ARRANTY OF ANY KIND WITH REGARD T O TH IS MA TERIAL, EITHER EXPRES S OR IMPLIED, EXCEPT AS PRO VIDED HER EIN, INCLUDING WITHOUT LIMIT A TION, THEREOF, W ARRANTIES AS T O MARKET ABILITY, MERCHANT ABILITY, FITNESS FOR A P ARTICULAR PURPOSE OF USE OR NONINFRINGEMENT. CANON INC. SHALL NO T BE LIABLE FOR ANY DIRECT, INCIDENT AL, OR CONSEQUENTIAL D AMAGES OF ANY NA TURE, OR LOSSES OR EXPENSES RESUL TING FR OM THE USE OF THIS MA TERIAL. A nonexh austive l ist of these do cuments is s et for th below. This list i s intended to be a guide only.Trademarks Canon, the Canon logo, and imageCLASS ar e trademarks o f Canon Inc. All other produ ct and brand names are registered tr ademarks, trademarks or service marks of their respe ctiv e o wners. As an E NERGY S TA R Partner, Canon U.S.A., Inc. has deter mined that this produc t meets the E NERGY S TA R Progra m f or energ y efficie ncy. The Inte rnational E NER GY S TA R Office Equipment Prog ram is an international prog ram that promote s energ y saving through the use of computers and other of fice equi pment. The progr am bac ks the de v elopment and dissemination of produc ts with f unctions t hat eff ectiv ely redu ce en erg y consu mption. It is an open system in which b usi ness proprietors can par ticipate v oluntarily. The targ eted products ar e off ice equipment, such as comput ers, displa ys, printers, facsimi les, and copiers. The standards and logo s are uni f orm among par ticipati ng nations. User s in the U.S.A.

[aidsaccess.com/ckupload/files/canon-mx330-printer-manual.pdf](http://aidsaccess.com/ckupload/files/canon-mx330-printer-manual.pdf)

PreInstallatio n Require ments for Canon Fa csimile Equipment A. Location Supply a suitable table, cabi net, or desk. See p. 131 for the machine's weight and dimens ions. B. Orde r Inf ormation 1. Only a s ingle li ne, touchtone or rotar y tel ephone se t is to be used. 2. Order a n RJ11C modular jack USO C code, which shou ld be ins talled by the telephon e company. If the RJ11 C jack is not pre sent, instal lation c annot occ ur. 3. Order a regular voice grade line or the equivalent from your telephone company' s bu sine ss r epr esen tativ e. Use one line per machine. This ma chine is not su pported on V oice Ov er Internet Protoco l V OIP. C. P ower Requirements This equi pment sh

ould be connected to a standard 120volt AC, threewire grounded outlet only. Do not connect this machine to an outlet or power line shared with other appliances that cause "electrical noise." Air conditioners, electric typewriters, copiers, and machines of this sort generate electrical noise which often interferes with communication equipment and the sending and receiving of documents. If requested, this number must be provided to the telephone company. An FCC compliant telephone cord and modular jack are provided with this equipment. This equipment is designed to be connected to the telephone network or premises wiring using a compatible modular jack which is Part 68 compliant. See the Starter Guide for details. The Ringer Equivalence Number REN is used to determine the number of devices that may be connected to a telephone line. Excessive RENs on a telephone line may result in the devices not ringing in response to an incoming call. In most but not all areas, the sum of RENs should not exceed five 5.0. To be certain of the number of devices that may be connected to a line, as determined by the total RENs, contact the local telephone company. Connection to party lines is subjected to state tariffs.

**In Case of Equipment Malfunction** Should any malfunction occur which cannot be corrected by the procedures described in this guide, disconnect the equipment from the telephone line and unplug the power cord. The telephone line should not be reconnected or the power cord plugged in until the problem is completely resolved. Users should contact Canon Authorized Service Facilities for servicing of equipment. Information regarding Authorized Service Facility locations can be obtained by calling Canon Customer Care Center 18008284040. Rights of the Telephone Company Should the equipment cause harm to the telephone network, the telephone company may temporarily disconnect service. The telephone company also retains the right to make changes in facilities and services which may affect the operation of this equipment. When such changes are necessary, the telephone company is required to give adequate prior notice to the user. FCC Notice imageCLASS MF4150 Model F149200 This device complies with Part 15 of the FCC Rules. Operation is subject to the following two conditions 1 This device may not cause harmful interference, and 2 this device must accept an interference received, including interference that may cause undesired operation. **NO TE** This equipment has been tested and found to comply with the limits for a class B digital device, pursuant to Part 15 of the FCC Rules. These limits are designed to provide reasonable protection against harmful interference in a residential installation. This equipment generates, uses and can radiate radio frequency energy and, if not installed and used in accordance with the instructions, may cause harmful interference to radio communications. However, there is no guarantee that interference will not occur in a particular installation.

Use of shielded cable is required to comply with class B limits in Subpart B of Part 15 of FCC Rules. Do not make any changes or modifications to the equipment unless otherwise specified in this manual. If such changes or modifications should be made, you could be required to stop operation of the equipment. Canon U.S. A., Inc. One Canon Plaza, Lake Success, NY 11042, U.S.A. TEL No. 1516 3285600 The Telephone Consumer Protection Act of 1991 makes it unlawful for any person to use a computer or other electronic device to send any message via a telephone fax machine unless such message clearly contains in a margin at the top or bottom of each transmitted page or on the first page of the transmission, the date and time it is sent and an identification of the business or other entity, or other individual sending the message and the telephone number of the sending machine or such business, other entity, or individual. In order to program this information into the machine, follow the instructions in the Starter Guide. **User s in Canada** PreInstallation Requirements for Canon Facsimile Equipment A. Location Supply a suitable table, cabinet, or desk. See p. 131 for the machine's weight and dimensions. B. Order Information 1. Provide only a single line to touchtone or rotary telephone set terminated with a standard 4pin modular phone plug. Touchtone is recommended if available in your area. 2. Order a n CA11A modular jack USOC code, which should be installed by the telephone company. If the CA11 A jack

is not present, installation cannot occur. 3. Order a normal business line from your telephone company's business representative. The line should be a regular voice grade line or equivalent. Key telephone systems are not recommended because they send nonstandard signals to individual telephones for ringing and special codes, which may cause a fax error. C.

**Power Requirements** The power outlet should be a three prong grounded receptacle Single or Duplex. It should be independent from copiers, heaters, air conditioners or any electric equipment that is thermostatically controlled. The rated value is 120 volts and 15 amperes. The CA11A modular jack should be relatively close to the power outlet to facilitate installation. Notice This equipment meets the applicable Industry Canada Terminal Equipment Technical Specifications. This is confirmed by the registration number. The abbreviation, IC, before the registration number signifies that registration was performed based on a Declaration of Conformity indicating that Industry Canada technical specifications were met. It does not imply that Industry Canada approved the equipment. Cet appareil est conforme aux Spécifications techniques des équipements terminaux de l'Industrie du Canada. Ceci est confirmé par le numéro d'enregistrement. L'abréviation IC précédant le numéro d'enregistrement signifie que l'enregistrement a été effectué sur la base de la Déclaration de conformité indiquant que le produit est conforme aux spécifications techniques du Canada. Ceci n'implique pas que le produit ait été approuvé par l'industrie du Canada. Before installing this equipment, users should ensure that it is permissible to be connected to the facilities of the local telecommunications company. The equipment must also be installed using an acceptable method of connection. The customer should be aware that compliance with the above conditions may not prevent degradation of service in some situations. Repairs to certified equipment should be coordinated by a representative designated by the supplier.

Any repairs or alterations made by the user to this equipment, or equipment malfunctions, may give the telecommunications company cause to request the user to disconnect the equipment. Users should ensure for their own protection that the electrical ground connections of the power utility, telephone lines and internal metallic water pipe system, if present, are connected together. This precaution may be particularly important in rural areas. CAUTION Users should not attempt to make such connections themselves, but should contact the appropriate electric inspection authority, or electrician, as appropriate. NOTE This Class B digital apparatus meets all requirements of the Canadian Interference Causing Equipment Regulations. Cet appareil numérique de la classe B respecte toutes les exigences du Règlement sur le matériel brouilleur du Canada. The Ringer Equivalence Number REN for this terminal equipment is 1.0. The REN assigned to each terminal equipment provides an indication of the maximum number of terminals allowed to be connected to a telephone interface. The termination on an interface may consist of any combination of devices subject only to the requirement that the sum of the Ringer Equivalence Numbers of all the devices does not exceed five. Le Nombre d'équivalence Ringer REN de cet appareil terminal est 1.0. Le REN attribué à chaque équipement terminal fournit une indication sur le nombre maximum de terminaux pouvant être connectés sur une interface téléphonique. La terminaison sur une interface peut consister en n'importe quelle combinaison d'appareils, à la condition seulement que la somme des Nombres d'équivalence Ringer de tous les appareils ne soit pas supérieure à 5. CANON CANADA INC. 18006522666 9 A.M. to 8 P.M.

EST Monday through Friday excluding holidays Laser Safety This machine complies with 21 CFR Chapter 1 Subchapter J as a Class 1 laser product under the U.S. Department of Health and Human Services DHHS Radiation Performance Standard according to the Radiation Control for Health and Safety Act of 1968. This means that the machine does not produce hazardous radiation. Since radiation emitted inside the machine is completely confined within protective housings and external covers, the laser beam cannot escape from the machine during any phase of user

operation. CDRH Regulations The Center for Devices and Radiological Health CDRH of the U.S. Food and Drug Administration implemented regulations for laser products on August 2, 1976. These regulations apply to laser products manufactured from August 1, 1976. Compliance is mandatory for products marketed in the United States. CAUTION Use of controls, adjustments, or performance of procedures other than those specified in this manual may result in hazardous radiation exposure. The label is attached to the laser scanner machine inside the machine and is not in a user access area. B Slide guides Adjust to the width of the document. C Document feeder tray Holds documents. D Document delivery tray Receives documents. E Operation panel Controls the machine. F Output tray Receives copies, prints and faxes. G Paper feeding tray Loads the paper supply. I Platen glass Place documents. J Output tray extension Extension for the output tray. K Paper stopper Prevents the paper from falling off the output tray. For LGL paper, pull out the output tray extension first, and then open the paper stopper. L Slide guides for multi purpose tray Adjusts to the width of the paper. M Paper guide rail Holds the paper supply. ND U S T C O V E R Protects the paper supply in the paper feeding tray from the dirt and dust.

<https://ayurvedia.ch/bosch-hot-water-manual>